

VALVE & ACTUATOR

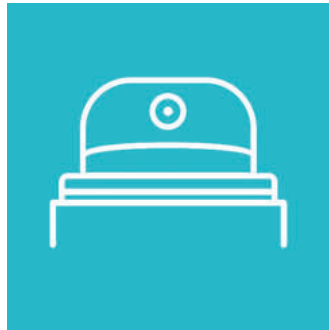




VALVE



B.O.V.



ACTUATOR



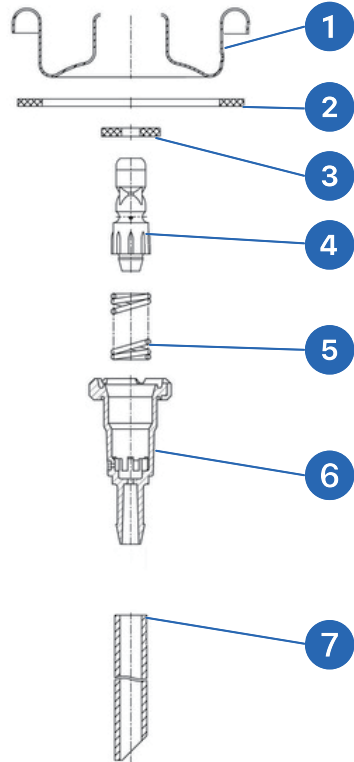
OVERCAP

VALVE



| sales@cnshining.com

| www.cnshining.com



MOUNTING CUP

Aluminium

- With or without dimples
- Epoxy clear/gold lacquer

Tinplate

- With or without dimples
- Tinplate with PP (Polypropylene) laminated
- Plain tinplate
- Both-side clear/gold -lacquered tinplate

OUTER GASKET

Buna, Butyl

INNER GASKET

Neoprene, Buna, Viton, Butyl

STEM

PA(Polyamide)
POM(Polyoxymethylene)

SPRING

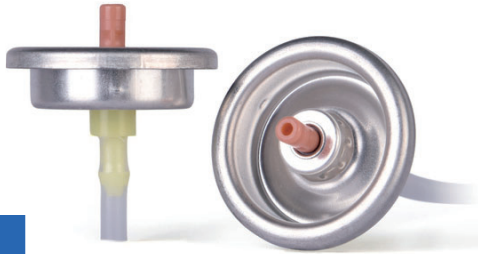
Stainless steel (SUS304, 316)

HOUSING

PA(Polyamide)
POM(Polyoxymethylene)

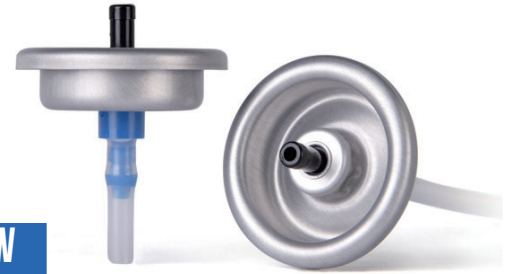
DIPTUBE

PE (Polyethylene) with straight cut or V cut



NV25.4-ST

- Standard 1-inch male valve
- Continuous spray
- Idea for non-powder contents like water, gel, foam, mousse



NV25.4-PW

- Standard 1-inch male valve
- Continuous spray
- For powder based content like antiperspirants



NV25.4-FM

- Standard 1-inch female valve
- Continuous spray
- For technical products like paint and adhesives



NV25.4-360

- Standard 1-inch ball valve
- Continuous spray
- For upright or upside down 360° spraying

NV25.4-UD



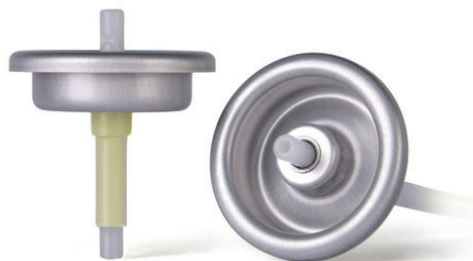
- Standard 1-inch male valve
- Only upside-down use
- No diptube
- Continuous spray
- For products that must be use in inverted position

NV25.4-LG



- Standard 1-inch male valve
- Metal or plastic stem
- No diptube
- Continuous spray
- For lighter gas refill

NV25.4-MD



- Standard 1-inch male valve
- Metered dose valve
- For air-freshener, cosmetics, pest control dispensers, etc.
- Dosage: 25、35、50、75、100、120、150、200ml

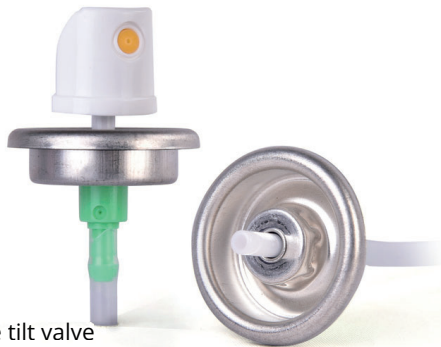
NV25.4-PS



- Standard 1-inch pump valve
- Metered dose valve
- No propellant required

NV25.4-TP

- Standard 1-inch male tilt valve
- Continuous spray



NV20-PS

- 20mm pump valve
- Metered dose valve
- No propellant required



NV20-ST

- Standard 20mm valve
- Continuous spray



NV20-MD

- 20mm male valve
- Metered dose valve
- Dosage: 25、35、50、75、100、120、150、200mcl



NV25.4-GA



- Standard 1-inch male valve
- Continuous spray
- Special mounting cup for portable gas stove valve

NV25.4T-PU



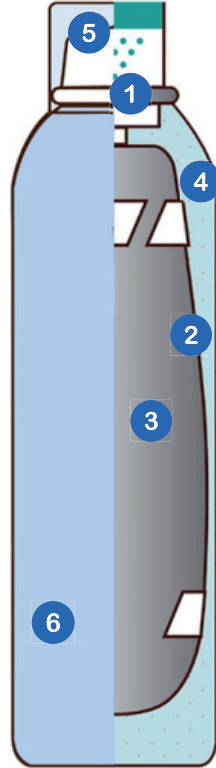
- 1-inch PU foam gun valve
- Reinforced stem design
- Perfect fit in most common straw adapters

BAG ON VALVE



| sales@cnshining.com

| www.cnshining.com



Valve:

B.O.V. systems offer both female and male valves, 1-inch and 20mm valve.

B.O.V.:

FDA and LFGB-approved multi-layer laminated pouches, capacity from 1 to 14 fl. oz.

Product:

Compatible with liquids, gels, and foams.
Not compatible with dry powders.

Propellant:

Compressed gas or nitrogen.

Actuator & Cap:

Various actuators available, continuous 360° spray.

Aerosol Can:

Aluminium and tinplate. Multiple shapes are supported 24-hour leak test, clean room manufacturer.

BAG ON VALVE AEROSOL CAN SIZE

Product Number	Can Size (mm)	Filling Capacity (ml)	BOV Size (mm)
NV25.4E-30	Φ35*90	30	60*65*25
NV25.4E-50	Φ35*110	50	90*65*25
NV25.4E-80	Φ40*120	80	100*80*25
NV25.4E-100	Φ45*125	100	100*90*25
NV25.4E-150	Φ45*150	125	125*90*25
NV25.4E-150-1	Φ50*155	150	125*90*25
NV25.4E-200	Φ53*180	200	145*100*32
NV25.4E-300	Φ59*215	300	180*100*32
NV25.4E-300-1	Φ66*180	300	150*115*35
NV25.4E-400	Φ66*215	400	190*115*35
NV25.4E-500	Φ66*240	500	213*115*35



BAG ON VALVE AEROSOL CAN SIZE



NV25.4E-30
30ml B.O.V.



NV25.4E-50
50ml B.O.V.



NV25.4E-80
80ml B.O.V.



NV25.4E-100
100ml B.O.V.



NV25.4E-150
150ml B.O.V.



NV25.4E-200
200ml B.O.V.



NV25.4E-300
300ml B.O.V.



NV25.4E-500
500ml B.O.V.

ACTUATOR



| sales@cnshining.com

| www.cnshining.com



Stem-Fitting Spray



Cup-Fitting Spray



Twist-Lock Spray



Can-Fitting Spray



Foam & Gel Spray



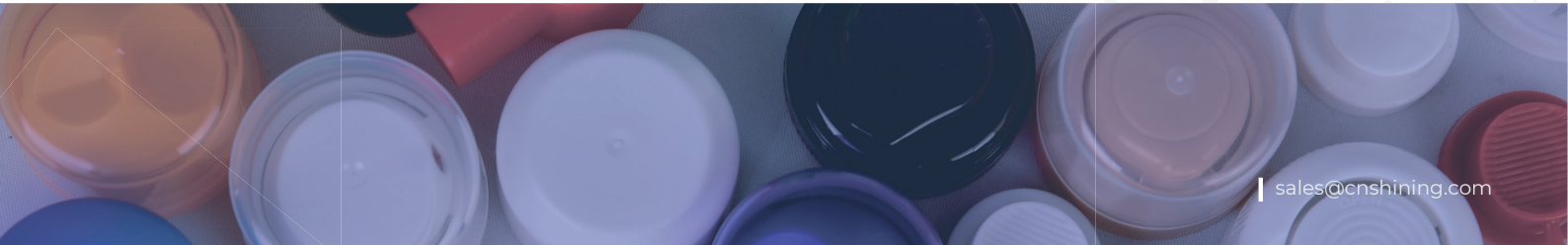
Nasal Spray



Fire Extinguisher



Special



STEM-FITTING SPRAY SERIES



- ✓ **Type:** Button Actuators
- ✓ **Installation:** Fitted on the stem of the aerosol valve
- ✓ **Overcap:** Requires an additional overcap
- ✓ **Compatibility:** Designed for 1-inch male valves and B.O.V.
- ✓ **Color:** Customizable colors available
- ✓ **Application:** Suitable for liquids and low powders
- ✓ **Insert Orifice:**

0.010"(0.25MM),0.013"(0.33MM),0.016"(0.41MM),0.020"(0.51MM),
0.024"(0.61MM),0.025"(0.64MM),0.030"(0.75MM),0.032"(0.80MM)



STEM-FITTING SPRAY SERIES



NVA001



NVA002



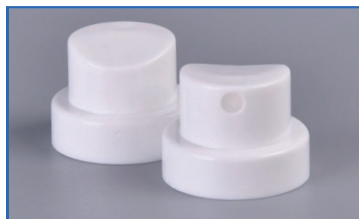
NVA006



NVA008



NVA009



NVA010



NVA011



NVA012



NVA017

CUP-FITTING SPRAY



- ✓ **Type:** 35mm Spray Cap
- ✓ **Installation:** Fixed onto the aerosol mounting cup
- ✓ **Overcap:** Replaceable with various overcaps
- ✓ **Compatibility:** Designed for 1-inch male valves and B.O.V.
- ✓ **Color:** Customizable colors available
- ✓ **Application:** Suitable for liquids and low powders
- ✓ **Insert Orifice:**

0.010"(0.25MM),0.013"(0.33MM),0.016"(0.41MM),0.020"(0.51MM),
0.024"(0.61MM),0.025"(0.64MM),0.030"(0.75MM),0.032"(0.80MM)



CUP-FITTING SPARY



NVSA35002



NVSA3504



NVSA35007



NVSA35011



NVSA35012



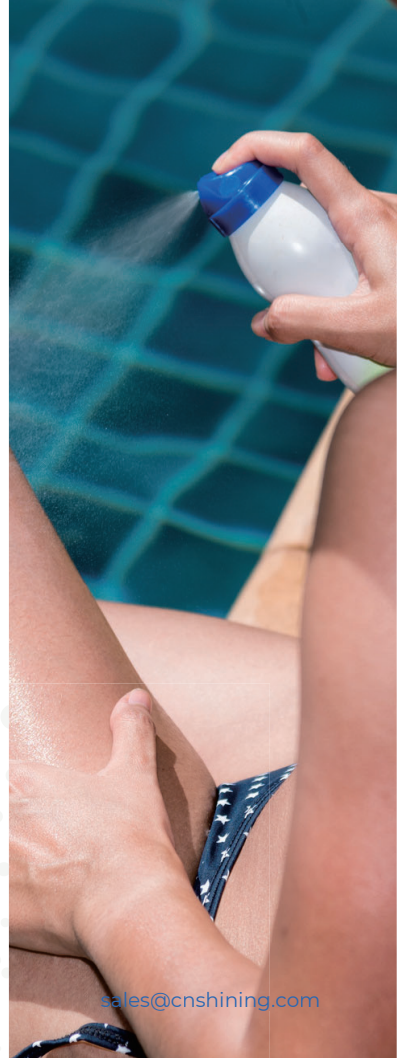
NVSA35013



NVSA35014



NVSA35005



TWIST-LOCK SPRAY



- ✓ **Type:** 35mm Twist-Lock Spray
- ✓ **Features:** On-off locking system, twist-to lock
- ✓ **Installation:** Fixed onto the aerosol mounting cup
- ✓ **Overcap:** No overcap required
- ✓ **Compatibility:** Designed for 1-inch male valves and B.O.V
- ✓ **Color:** Customizable colors available
- ✓ **Application:** Suitable for liquids and low powders
- ✓ **Insert Orifice:**

0.010"(0.25MM),0.013"(0.33MM),0.016"(0.41MM),0.020"(0.51MM),
0.024"(0.61MM),0.025"(0.64MM),0.030"(0.75MM),0.032"(0.80MM)



TWIST-LOCK SPARY



NVSA35001



NVSA35003



NVSA35009



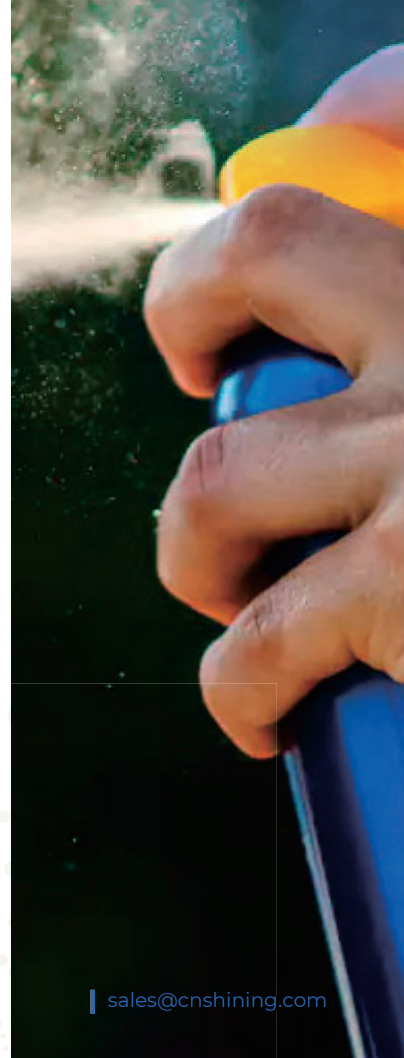
NVSA35010



NVSA53001



NVSA53002



CAN-FITTING SPRAY



- ✓ **Type:** Can-Fitting spray
- ✓ **Features:** Hide the aerosol valve and aerosol can shoulder
- ✓ **Installation:** Fixed onto the aerosol mounting cup
- ✓ **Compatibility:** Designed for 1-inch male valves and B.O.V.
- ✓ **Color:** Customizable colors available
- ✓ **Application:** Suitable for liquids and low powders
- ✓ **Insert Orifice:**

0.010"(0.25MM),0.013"(0.33MM),0.016"(0.41MM),0.020"(0.51MM),
0.024"(0.61MM),0.025"(0.64MM),0.030"(0.75MM),0.032"(0.80MM)



CAN-FITTING SPRAY



NVSA45001 Φ 45x40



NVSA45003 Φ 45x38



NVSA45002 Φ 45x40



NVSA50001 Φ 45x40



NVSA53003 Φ 53x41



GEL & FOAM ACTUATOR

- ✓ **Type:** 35mm actuator
- ✓ **Installation:** Fixed onto the mounting cup or valve stem
- ✓ **Compatibility:** Designed for 1-inch male valves and B.O.V.
- ✓ **Color:** Customizable colors available
- ✓ **Application:** Gels, foam , mousse and whipped cream



FOAM & MOUSSE



NVFA001



NVFA002



NVFA003



NVFA005



NVFA006



NVFA102



NVFA103



NVFA104



GEL



NVGA001



NVGA002



NVGA003



WHIPPED CREAM



NVCA001



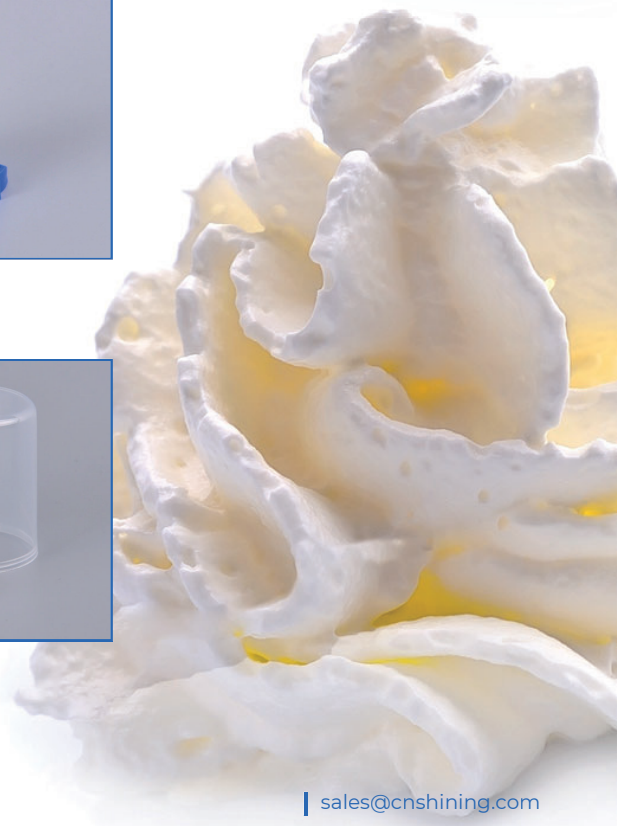
NVCA002



NVFA004



NVFA007



NASAL SPRAY ACTUATOR



- ✓ **Type:** 35mm nasal spray actuator
- ✓ **Features:** Ergonomic design for easier delivery to children and the elderly
- ✓ **Installation:** Fixed onto to aerosol mounting cup or valve stem
- ✓ **Manufacturing:** Clean room production
- ✓ **Overcap:** Custom-fit for actuator shape
- ✓ **Compatibility:** Designed for 1-inch male valves and B.O.V.
- ✓ **Color:** Available in customizable options
- ✓ **Application:** Suitable for seawater solutions



NASAL SPRAY



NVNS001



NVNS002



NVNS003



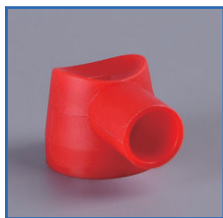
NVNS004



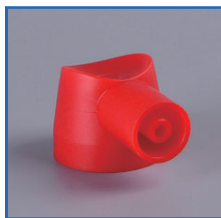
FIRE EXTINGUISHER ACTUATOR SERIES



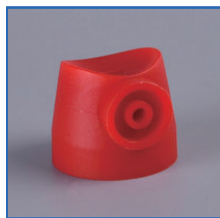
NVFR001



NVFR002



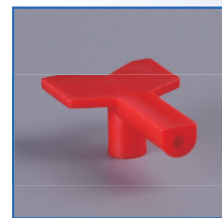
NVFR003



NVFR004



NVFR005



NVFR006

NVFR007



NVFR008



SPECIAL ACTUATOR



NVOA001 (Food Oil)



NVOA002 (Oxygen)



NVOA003 (Industry)



NVOA004 (Shoe)



NVOA005(PU)



OVERCAP



| sales@cnshining.com

| www.cnshining.com



AEROSOL OVERCAP

- ✓ **Diameter:** 22, 25, 35, 38, 40, 45, 50, 53, 59, 66
- ✓ **Colors:** Customizable available in gloss, matte, and electroplated finishes
- ✓ **Types:** Single wall cap, double wall cap
- ✓ **Installation:** Round and rim should aerosol can, actuator and valve

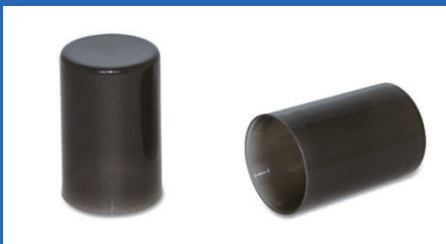


22 MM



NVC22036A / 22x36mm

25 MM



NVC25037A / 25x37mm

35 MM



NVC35025A / 35x25mm



NVC35026A / 35x26mm



NVC35026B / 35x26mm



NVC35029A / 35x29mm



NVC35030A / 35x30mm



NVC35033A / 35x33mm



NVC35036A / 35x36mm



NVC35040A / 35x40mm



NVC35040B / 35x40mm

38 MM

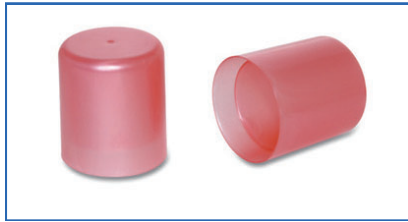


NVC38033A / 38x33mm

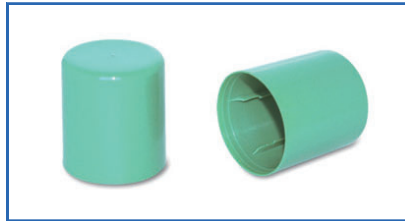


NVC38040A / 38x40mm

40 MM



NVC40044A / 40x44mm



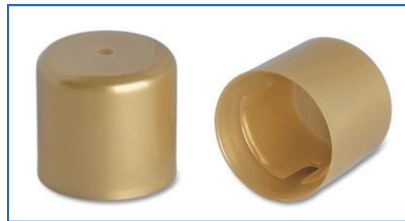
NVC40044B / 40x44mm



NVC40045A / 40x45mm



NVC40045B / 40x45mm



NVC40037A / 40x37mm

45 MM



NVC45045A / 45x45mm



NVC45041A / 45x41mm



NVC45042A / 45x42mm



NVC45039A / 45x39mm

50 MM



NVC50045A / 50x45mm



NVC50045B / 50x45mm



NVC50045C / 50x45mm



NVC50045D / 50x45mm



NVC50041A / 50x41mm

53 MM



NVC53047A / 53x47mm



NVC53047B / 53x47mm



NVC53047C / 53x47mm



NVC53047D / 53x47mm

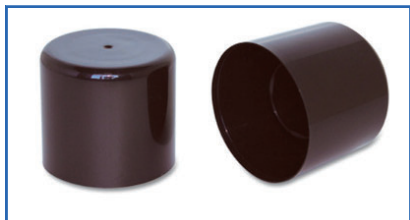


NVC53047E / 53x47mm



NVC53046A / 53x46mm

59 MM



NVC59051A / 59x51mm

66 MM



NVC66055A / 66x55mm